

MILITARY CLASS

ELECTRICAL:

Amps & volts - see table

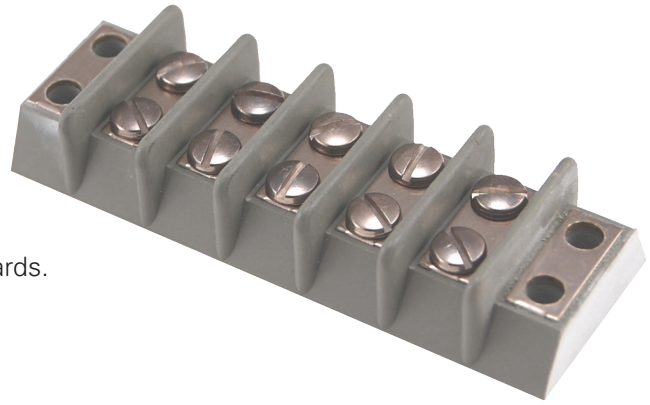
STANDARDS:

Compliant to the A-A-59125

A-A-59125 superseded MIL-T-55164-C in 1997

These terminal blocks are constructed to meet both standards.

RoHS compliant (All)



39TB05F

WEBSITE RESOURCES:

Detailed product data sheets

- Material information
- Termination & mounting specifications

Dimensional drawings & 3D CAD files

Accessories available

A-A-59125/ MIL-T-55164 INFORMATION		TERMINAL TYPE	VOLTAGE		AMPS	WIRE & LUG INFORMATION				
CLASS	SPEC #	DESCRIPTION	MAX RATED	DIELECTRIC WITH TEST	MAX RATED	SCREW SIZE	RECMD MAX WIRE SIZE	MS17143 LUG #	MAX LUG WIDTH	RECMD TORQUE Lb-In (N-M)
37 TB	/ 1	Double Screw	300 V RMS	3000 V RMS	15 Amp 60 Hz	#6	#16 AWG	-11	0.282" [7.2]	8-10 [0.9-1.1]
38 TB	/ 2	Double Screw	600 V RMS	3400 V RMS	20 Amp 60 Hz	#6	#14 AWG	-14	0.31" [7.9]	8-10 [0.9-1.1]
39 TB	/ 3	Double Screw	600 V RMS	4000 V RMS	30 Amp 60 Hz	#8	#10 AWG	-9	0.41" [10.4]	10-12 [1.1-1.4]
40 TB	/ 4	Single Screw Feed Thru	300 V RMS	3000 V RMS	7.5 Amp 60 Hz	#6	#18 AWG	-10	0.282" [7.2]	8-10 [0.9-1.1]
41 TB	/ 5	Single Screw Feed Thru	600 V RMS	3400 V RMS	10 Amp 60 Hz	#6	#16 AWG	-14	0.31" [7.9]	8-10 [0.9-1.1]
42 TB	/ 6	Single Screw Feed Thru	600 V RMS	4000 V RMS	15 Amp 60 Hz	#8	#14 AWG	-8	0.41" [10.4]	10-12 [1.1-1.4]